

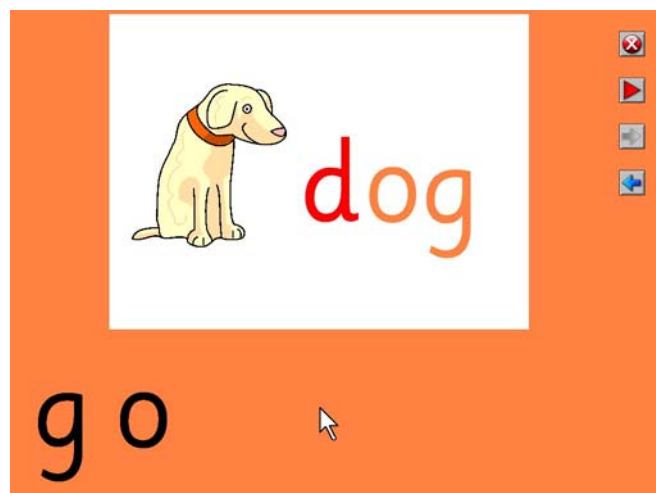
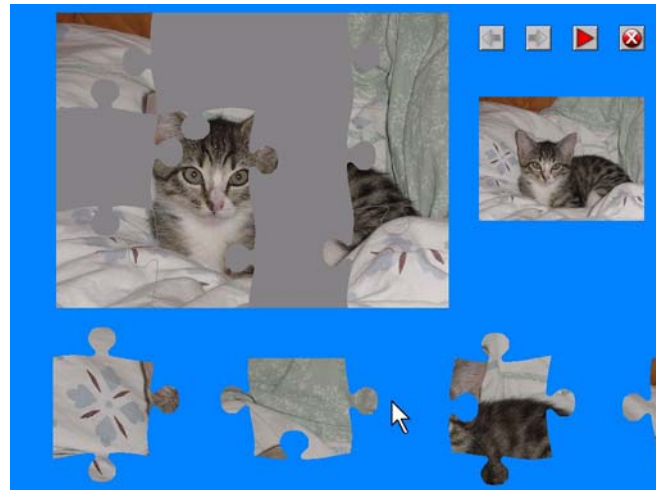
The Jigworks Guide

The Jigworks Guide




1. What is Jigworks?	3
2. Completing an activity	4
3. How do I create an activity?	4
4. Creating a new Activity Set	5
5. Creating a new activity	5
6. Creating an interlocking jigsaw	6
7. Creating an inset puzzle	6
8. Adding text and picture pieces	7
9. Easy to customize	7
10. Easy to link and edit activities	8
11. Find out more	8

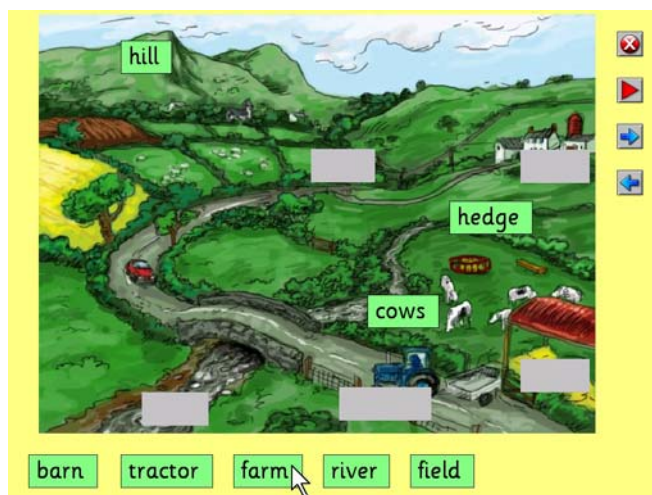
1. What is Jigworks?

Jigworks is a tool for creating and completing on-screen jigsaw puzzles, inset puzzles and more! You can create interlocking jigsaws in seconds, or cut out pieces from a picture, or add picture pieces or even text for early reading activities. You can also download free activities from LearningGrids.com and use them as they are, or modify them to suit your needs.



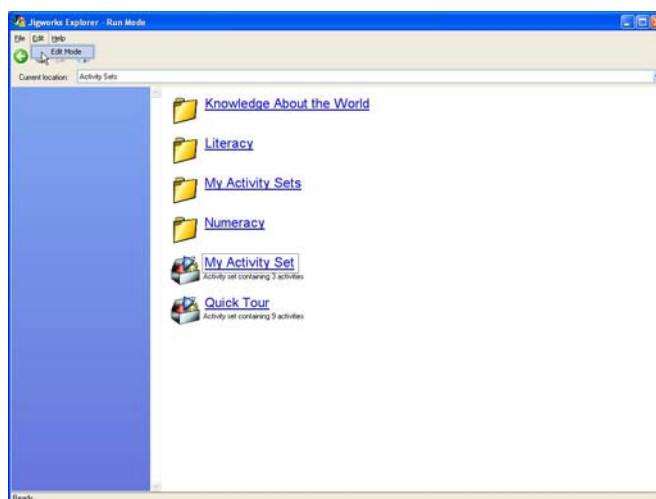
2. Completing an activity

To complete an activity, simply click  to take the pieces out of the puzzle, then click on a piece to pick it up, and then click to place it back in the puzzle. You can link activities together, and move between them with the  and  buttons. You can also use switches to move the pieces and press the buttons (instead of a mouse), so anyone can use it.



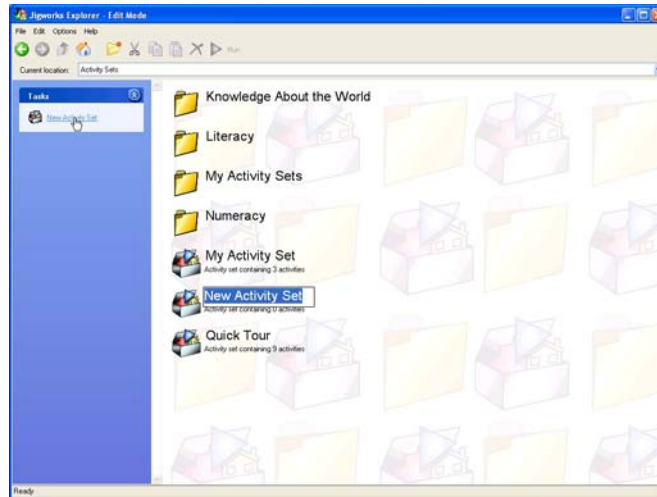
3. How do I create an activity?

When you start Jigworks, you see Jigworks Explorer. This lets you find all your Jigworks activities easily and start them with a single click. To create an activity, simply enter 'Edit' mode – open the Edit menu and select 'Edit Mode'. You can now edit any existing activities, or create a new one.



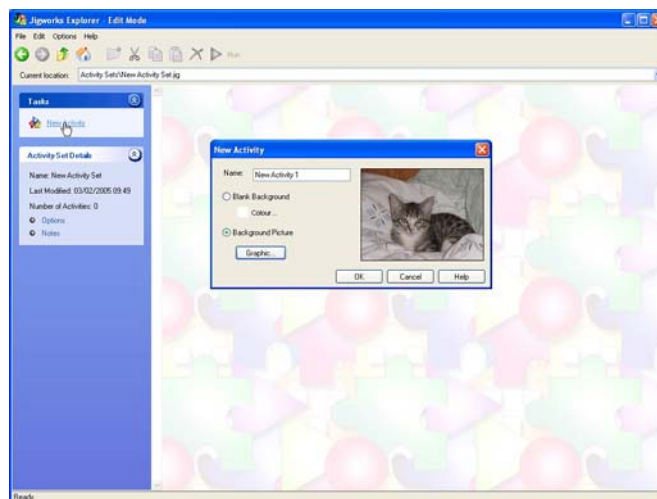
4. Creating a new Activity Set

Activities are part of Jigworks 'Activity Sets'. To create a new Activity Set, simply click 'New Activity Set' in the Task Pane on the left, and type a name for your Activity Set. If you double-click on an Activity Set, Jigworks Explorer will show you all the activities it contains. So if you double-click on your new Activity Set, you'll find it contains no activities yet.





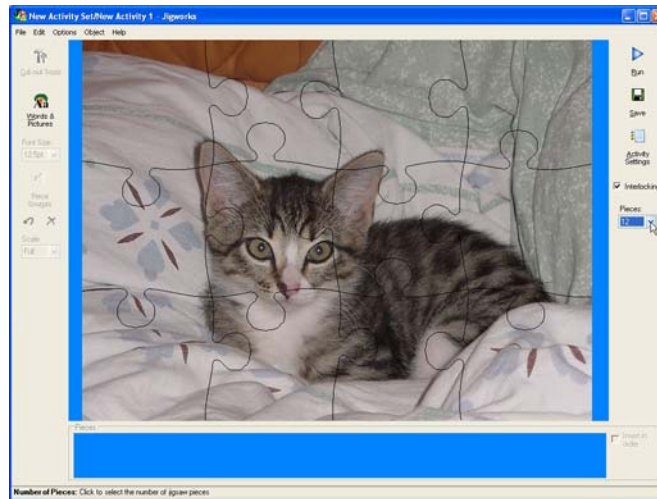
5. Creating a new activity

When inside your Activity Set, click 'New Activity' in the Task Pane. You can then choose a name and background picture for your activity. Simply click 'Graphic' and select a picture from your computer, and then click 'OK' to show the Jigworks activity editor.






6. Creating an interlocking jigsaw

The Jigworks activity editor is really easy to use. To create a simple interlocking jigsaw, just click 'Interlocking' and you'll see the pieces on the screen. To change the number of pieces, select a number from the drop-down list. Then click **Save**  to save your activity. To see your activity running, click **Run** .






7. Creating an inset puzzle

To cut out pieces of a picture, click **Cut-out Tools** . The Cut-out Tools let you select areas of the picture to make into pieces. Select the **Brush**  tool, click on the picture and drag the mouse until you've highlighted the area you want to make into a piece, and then click **Create Piece** . You can make as many pieces as you like.





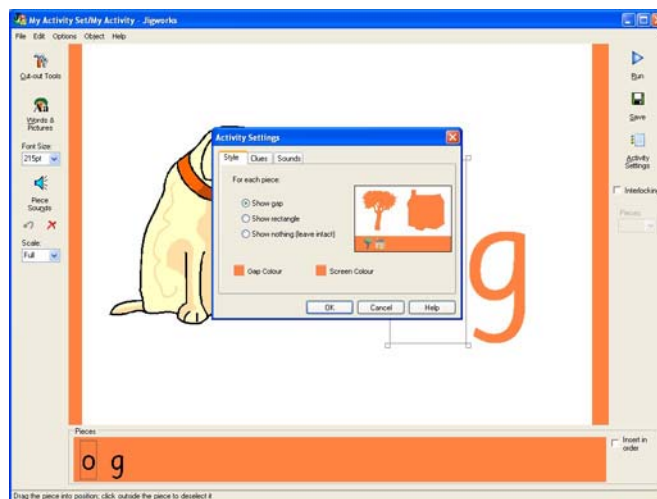
8. Adding text and picture pieces

You can also add text and pictures to a background and make them into pieces instantly. Click **Words & Pictures**  to show the Words & Pictures designer, and then type some text, or click **Choose Picture**  to add a picture. Jigworks comes with an educational picture library, so you can also type some text and click **Instant Picture**  to see if there's a picture that matches your text. When you click OK, the text and pictures are made into a piece – simply repeat to make as many pieces as you like!



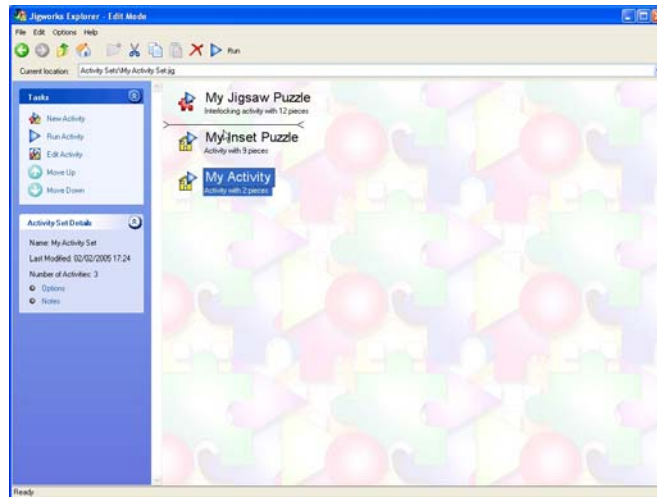
9. Easy to customize

To tailor your activity just the way you want, click **Activity Settings** . Change the colours, provide clues, or sounds or speech when you pick up or place a piece, or when you start or end an activity. You can add different sounds to different pieces, too – simply select a piece and click **Piece Sounds** .



10. Easy to link and edit activities

Jigworks Explorer makes it easy to link your activities – all the activities you add to an Activity Set are automatically linked. To change the order, simply drag an activity into a different position. To edit an activity, simply double-click on it. To protect your activities from editing, simply go back to Run Mode!



11. Find out more

Jigworks Pricing:

Jigworks (inc. Single User Licence)	£49
Jigworks Additional User Licence	£15
Jigworks 5-User Bundle	£99
Jigworks Training Booklet	£10*

*5-pack available for £40 or 10-pack for £70

Jigworks Training Courses:

Working in partnership with a number of the government's City Learning Centres, Crick Software offers courses at different locations across the UK. See the Crick Software website for dates and locations this year. The price for each training course is £120 per delegate.

Contact our Training Team:

kevin.lynch@cricksoft.com or eleri.hanley@cricksoft.com

For more information or to order Jigworks, contact Crick Software:

Crick Software Ltd, Crick House,
Boarden Close, Moulton Park,
Northampton NN3 6LF
United Kingdom

Telephone: +44 (0)1604-671691
Fax: +44 (0)1604-671692
Web: www.cricksoft.com
Email: sales@cricksoft.com

The Jigworks Guide

© Crick Software Ltd 2008