



Clicker 5 RM CC3 Network Installation

To install Clicker 5 on a network you first need to run the network installation on your server. This creates an MSI installer package for you to allocate to your workstations.

Workstation Prerequisites

Ensure the following Microsoft products are up-to-date on your workstations before installing Clicker 5. If they are not up-to-date you can install the software from the Clicker 5 CD.

a) Internet Explorer v5.5

Clicker requires at least Internet Explorer v5.5 or higher to be installed. You can install Internet Explorer v6 from the Clicker 5 CD; run `\\IE6\FLAT\WIN32\EN\ie6setup.exe`

b) Windows Installer v2.0

Clicker requires Windows Installer v2.0 or higher to be installed. To install Windows Installer v2.0 for Windows 98/ME workstations, run `instmsiA.exe` on the Clicker 5 CD, or for Windows NT/2000/XP, run `instmsiW.exe`

c) .NET Framework v1.1

Clicker requires .NET Framework v1.1 to be installed. **Clicker 5 will not work if you have only v2.0 installed!** To install .NET Framework v1.1, run `dotnetfx.exe` on the Clicker 5 CD. You may also download the RM package by searching for **DWN373284** on the RM website or by following this link:

<http://www.rm.com/Support/GeneralDownload.asp?cref=dwn373284>

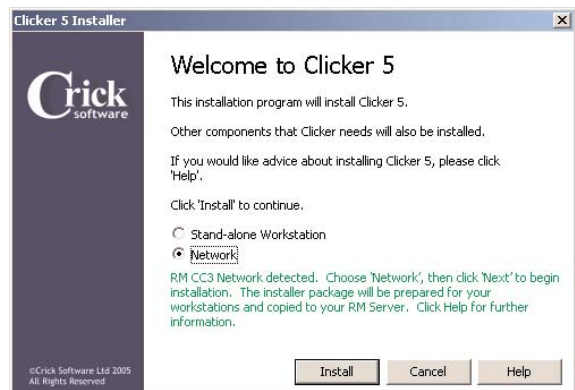
1. Server Installation

1.1 Insert the Clicker 5 CD

Insert the Clicker 5 CD into the server. If the CD does not launch automatically, run `Setup.exe` on the CD. Clicker detects that you are using a CC3 network.

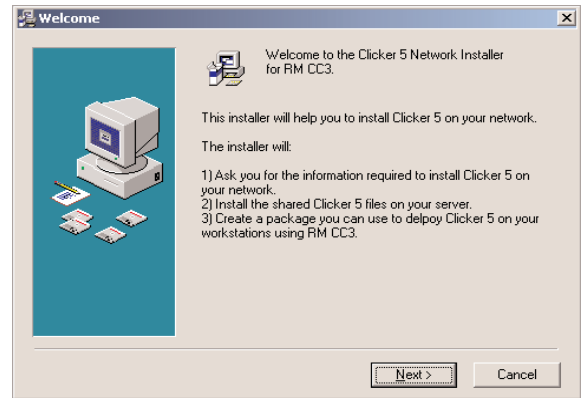
1.2 Choose Installation

Select **Network** and then click **Install**.



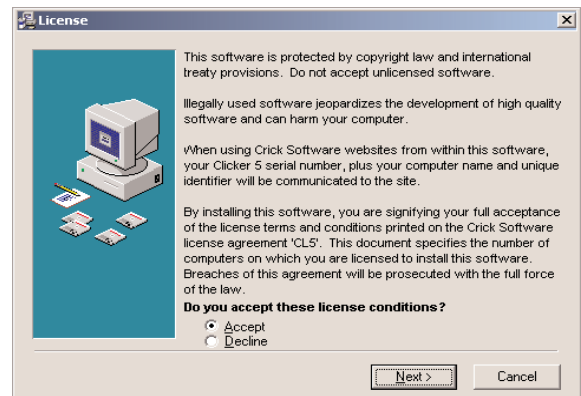
1.3 Welcome

Read the information and click **Next** to continue.



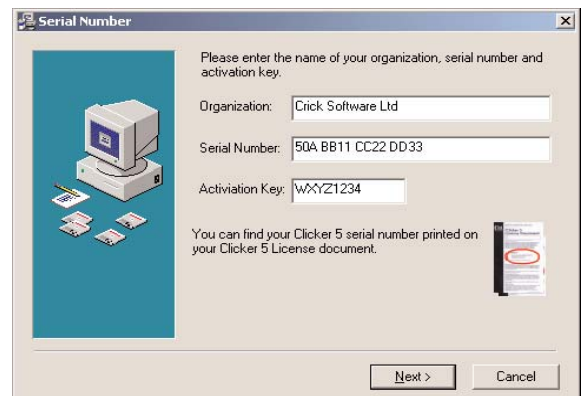
1.4 License Agreement

Read the license agreement and select **Accept** or **Decline**. Click **Next** to continue.



1.5 Serial Number

Enter the name of your school or organization.

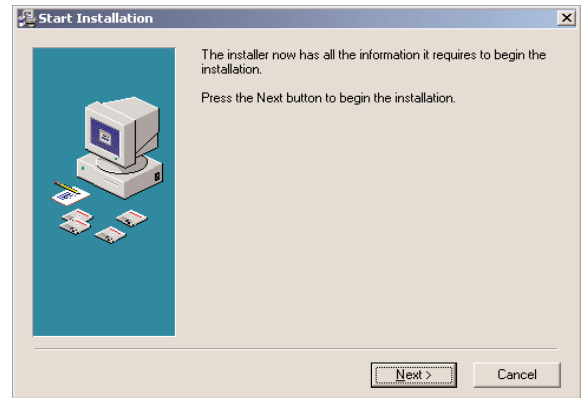


You also need to enter the **Serial Number** and **Activation Key** from your Clicker 5 License Document.

Click **Next** to continue.

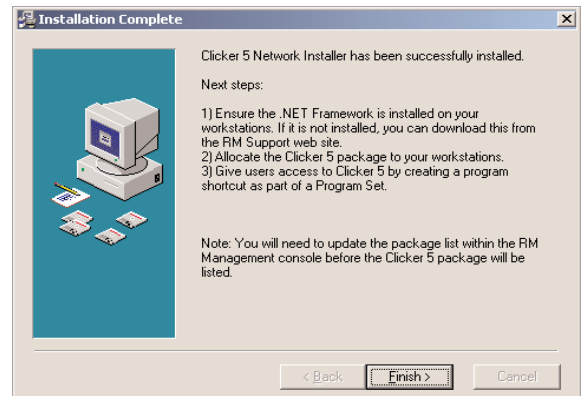
1.6 Start Installation

Click **Next** to begin the installation.



1.7 Installation Complete

Please read the information and click **Finish**.



2. Workstation Installation

Please allocate the package to your workstations via the RM Management console, as you usually would.