

Clicker 5 Network Installation

To install Clicker 5 on a network you first need to run the network installation on your server. This creates an MSI installer package to deploy Clicker 5 to each of your workstations.

Workstation Prerequisites

Ensure the following Microsoft products are up-to-date on your workstations before installing Clicker 5. If they are not up-to-date you can install the software from the Clicker 5 CD.

a) Internet Explorer v5.5

Clicker requires at least Internet Explorer v5.5 or higher to be installed. You can install Internet Explorer v6 from the Clicker 5 CD; run `\IE6\FLAT\WIN32\EN\ie6setup.exe`

b) Windows Installer v2.0

Clicker requires Windows Installer v2.0 or higher to be installed. To install Windows Installer v2.0 for Windows 98/ME workstations, run `instmsiA.exe` on the Clicker 5 CD, or for Windows NT/2000/XP, run `instmsiW.exe`

c) .NET Framework v1.1

Clicker requires .NET Framework v1.1 to be installed. **Clicker 5 will not work if you have only v2.0 installed!** To install .NET Framework v1.1, run `dotnetfx.exe` on the Clicker 5 CD.

1. Server Installation

1.1 Create shared folders

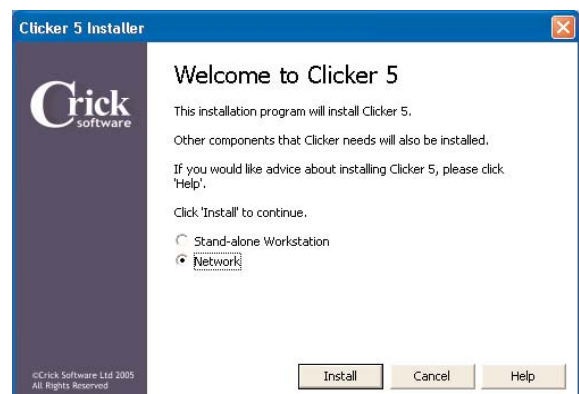
Create two new folders on your server; one to store shared Clicker resources and one to store the workstation installer package. Both folders must be accessible from your workstations.

1.2 Insert the Clicker 5 CD

Insert the Clicker 5 CD into the server. If the CD does not launch automatically, run `Setup.exe` on the CD.

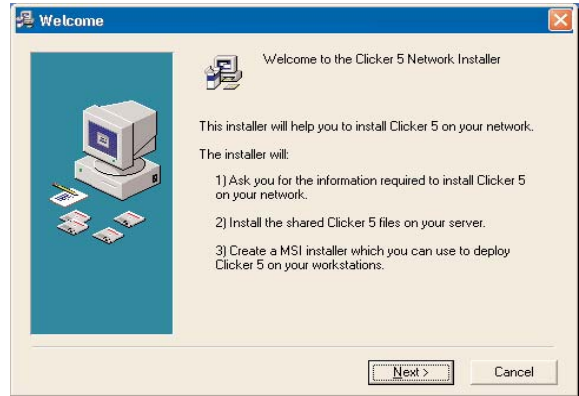
1.3 Choose Installation

Select **Network** and then click **Install**.



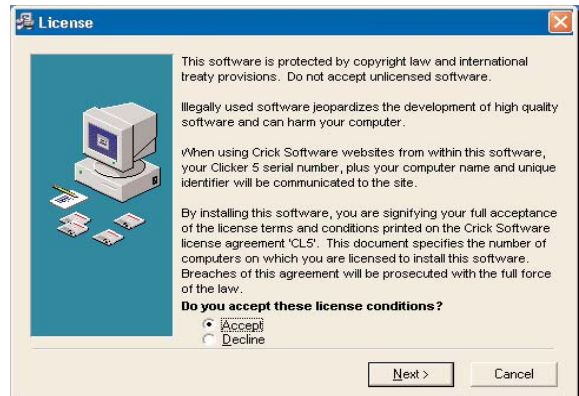
1.4 Welcome

Read the information and click **Next** to continue.



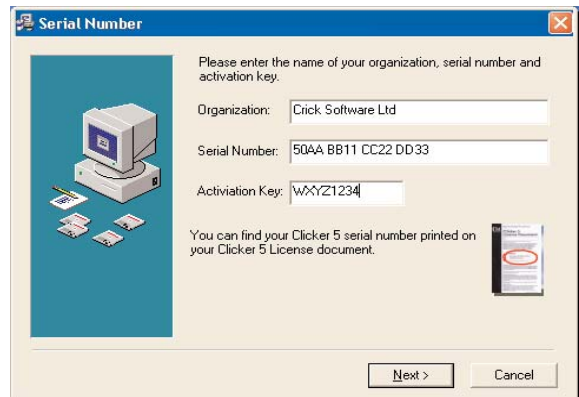
1.5 License Agreement

Read the license agreement and select **Accept** or **Decline**. Click **Next** to continue.



1.6 Serial Number

Enter the name of your school or organization.

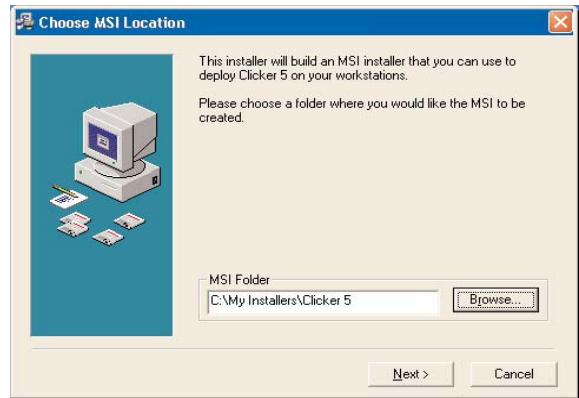


You also need to enter the **Serial Number** and **Activation Key** from your Clicker 5 License Document.

Click **Next** to continue.

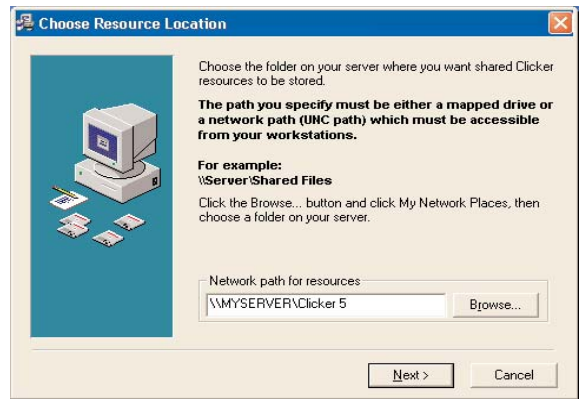
1.7 Choose MSI Location

Select the MSI folder created in step 1.1
Click **Next** to continue.



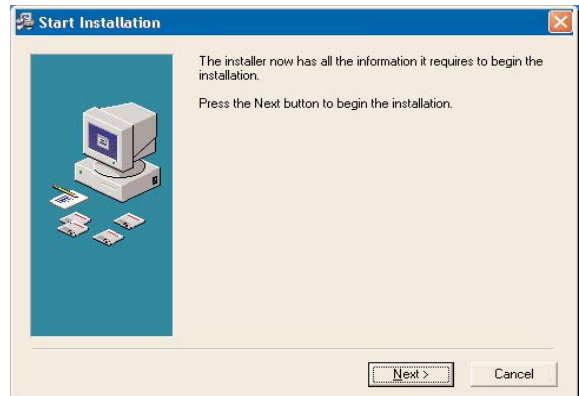
1.8 Choose Resource Location

Select the shared resource folder created in step 1.1
You must specify a UNC path, such as
`\\ComputerName\NameOfShare`
Click **Next** to continue.



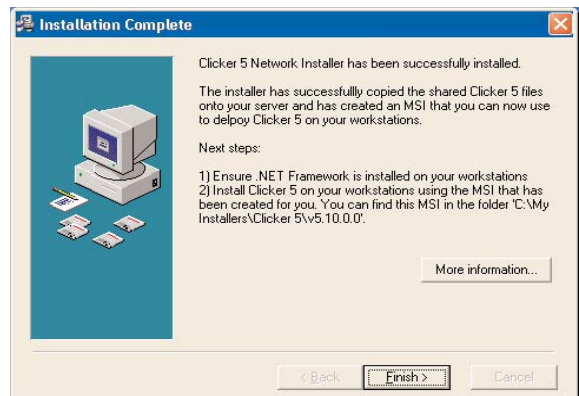
1.9 Start Installation

Click **Next** to begin the installation.



1.10 Installation Complete

Please read the information and click **Finish**.



2. Workstation Installation

2.1 Run the MSI on each workstation

Run Clicker 5.msi from the folder created in step 1.1 of the server installation.

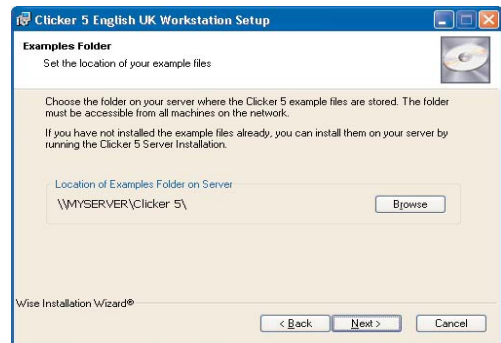
2.2 Welcome

Click **Next** to continue.



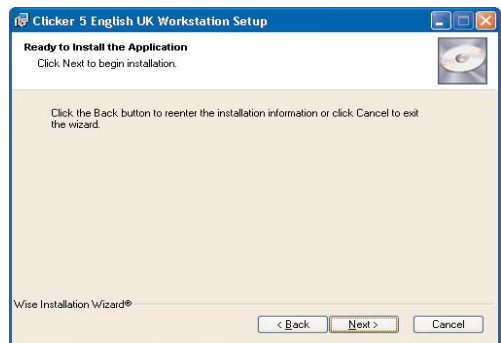
2.3 Shared resources folder

This defaults to the shared resource folder created in step 1.1 of the server installation.



2.4 Ready to install the application

Click **Next** to continue.



2.5 Installation complete

Click **Finish** to complete the installation.

